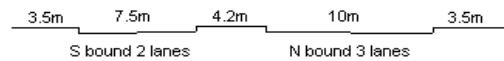


YEAR

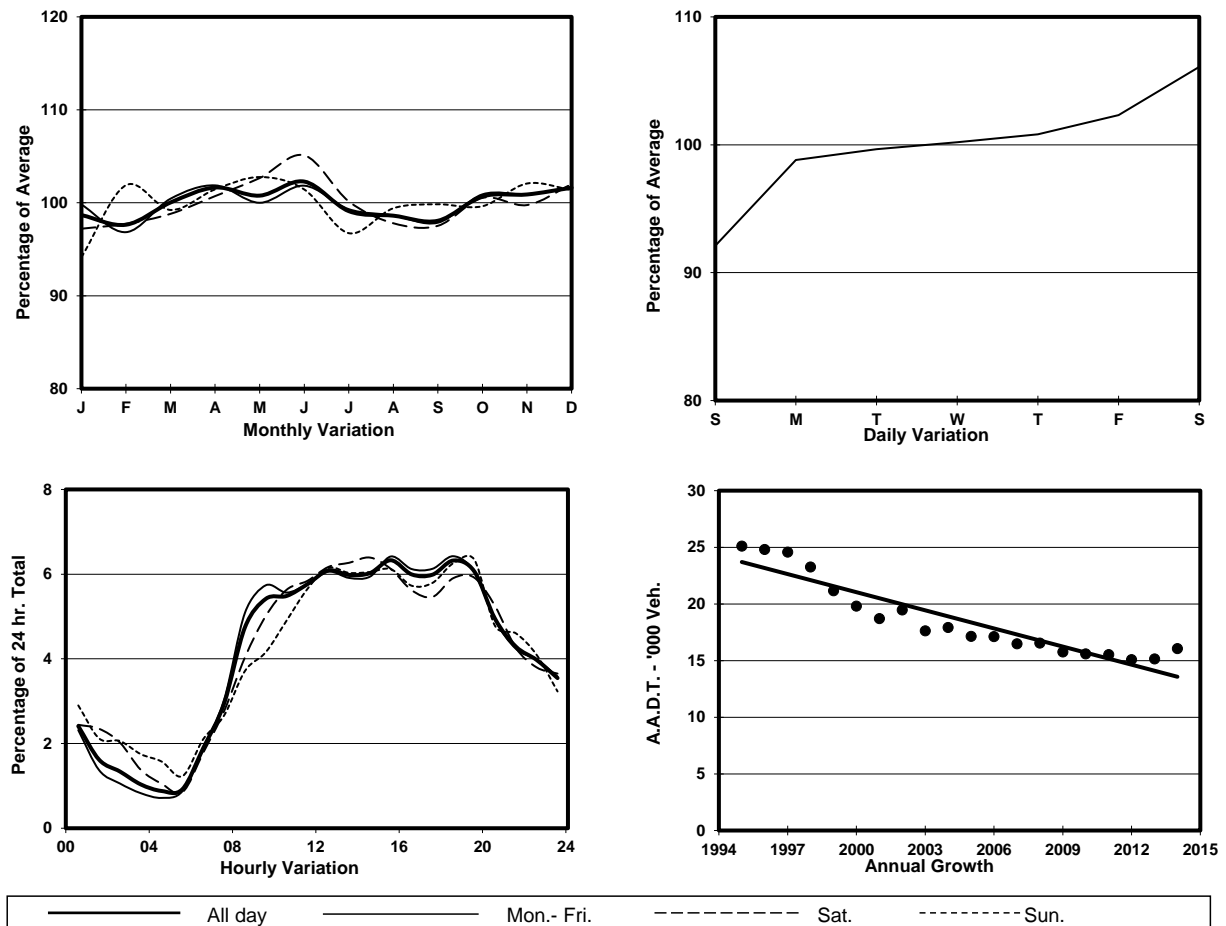
2014

LINK

CHATHAM RD S (from SALISBURY RD to MODY RD)

CORE STATION
ROAD NETWORK
ROAD TYPE3005
MAJOR
PRIMARY DISTRIBUTOR

1. TRAFFIC FLOW VARIATION AND GROWTH



2. TRAFFIC CHARACTERISTICS (BY DIRECTION)

| Parameter | All - Day | Mon. - Fri. | Sat. | Sun. |
|--------------------------------------|-----------|-------------|-----------|-----------|
| SOUTH BOUND | | | | |
| A.A.D.T. | 8950 | 9030 | 9460 | 8290 |
| R 12 / 24 - % | 69.7 | 70.5 | 67.2 | 67.9 |
| R 16 / 24 - % | 89 | 89.6 | 87.6 | 87.2 |
| AM Peak Hour | 0900-1000 | 0900-1000 | 0900-1000 | 0900-1000 |
| One-way flow at AM peak hour | 510 | 540 | 510 | 380 |
| T - % (AM) | - | - | - | - |
| PM Peak Hour | 1800-1900 | 1800-1900 | 1800-1900 | 1600-1700 |
| One-way flow at PM peak hour | 570 | 590 | 590 | 520 |
| T - % (PM) | - | - | - | - |
| Prop.of commercial vehicles - 16 hr. | - | - | - | - |
| NORTH BOUND | | | | |
| A.A.D.T. | 7110 | 7160 | 7660 | 6580 |
| R 12 / 24 - % | 63.9 | 65.3 | 62.9 | 57.3 |
| R 16 / 24 - % | 83.1 | 84.6 | 80.6 | 77.7 |
| AM Peak Hour | 0900-1000 | 0900-1000 | 0900-1000 | 0900-1000 |
| One-way flow at AM peak hour | 360 | 390 | 350 | 240 |
| T - % (AM) | - | - | - | - |
| PM Peak Hour | 1800-1900 | 1800-1900 | 1800-1900 | 1800-1900 |
| One-way flow at PM peak hour | 440 | 450 | 420 | 410 |
| T - % (PM) | - | - | - | - |
| Prop.of commercial vehicles - 16 hr. | - | - | - | - |

3. OTHER INFORMATION AND COMMENT